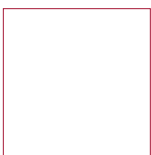
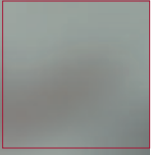
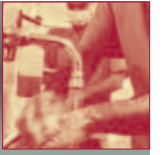
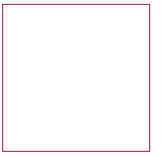
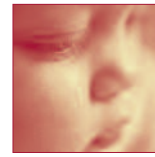


IRMA
TRUPOINT[®]
Blood Analysis System



The True Point of Care.



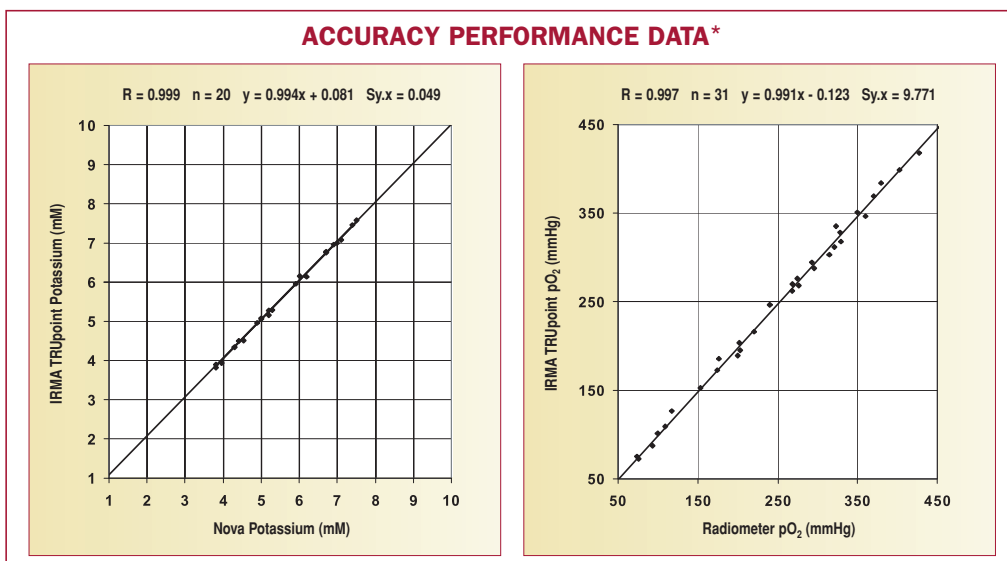
Accurate results where and when you need them. *IRMA TRUpoint sets the standard for testing blood gas, electrolytes and other chemistries right at your patient's side—the true point of care. This powerful, self-contained system can easily be transported from OR to CCU to ICU, or wherever you need it for immediate results and more timely diagnostic interventions.*

Bedside testing that's accurate,

ACCURATE

Obtain immediate results right at the bedside for improved efficiencies, diagnostic capabilities and procedural outcomes.

- Precise results within two minutes
- Lab-quality accuracy
- Comprehensive menu
- Custom correlation for site-specific analyte reference ranges



* Verification studies at multiple sites

ONBOARD THERMAL PRINTER



**OPTIONAL
BAR CODE SCANNER**



SINGLE-USE CARTRIDGE

INTERACTIVE TOUCH SCREEN



reliable and self-contained.

RELIABLE

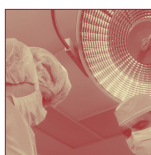
Trust, integrity and performance with simple, intuitive operation and advanced quality features.

- Single-use cartridge for maintenance-free convenience
- Self-contained calibrant in each cartridge
- Real-time, automatic electronic quality control for enhanced safety and improved compliance
- Exceptional service and support

SELF-CONTAINED

Discover complete portability with lightweight, easy-grip, battery-operated, all-in-one design.

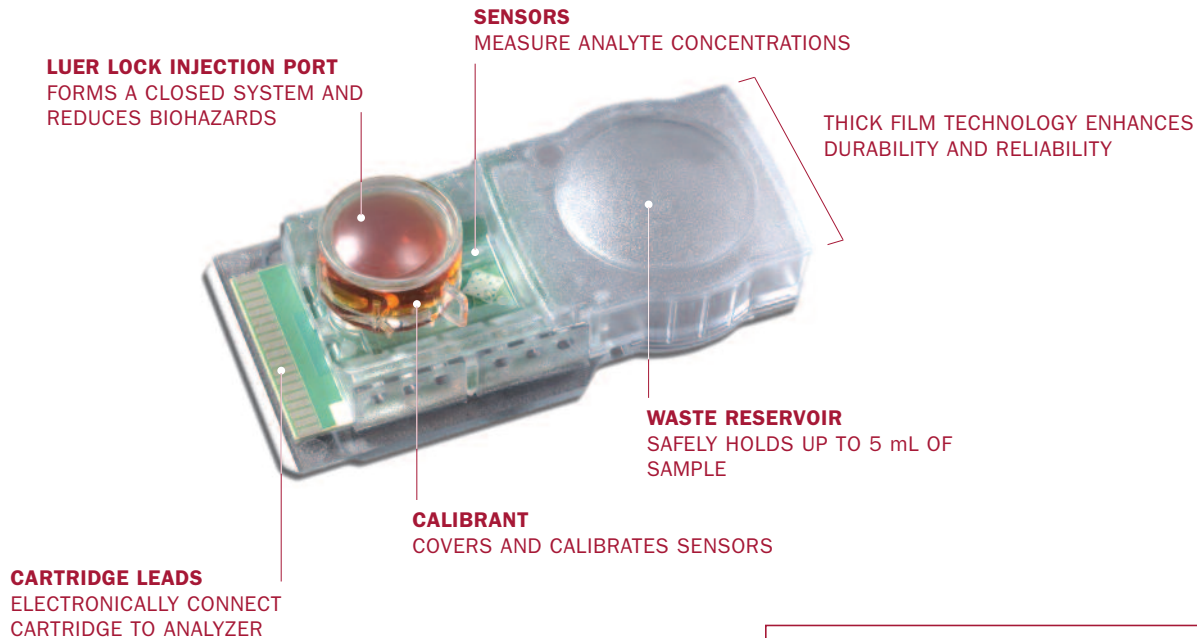
- Interactive touch screen
- Onboard thermal printer documents results and test notes
- Complete data management from patient information to lot traceability
- Bar code capabilities for on-the-spot accuracy
- Comprehensive connectivity, including modem, serial port or Ethernet



IRMA
TRUPOINT[®]
Blood Analysis System

SINGLE-USE CARTRIDGE: ANOTHER TRUPOINT ADVANTAGE

An important feature of the IRMA TRUpoint system, is the single-use cartridges which are available in a variety of analyte configurations. Each cartridge contains miniaturized electrochemical and/or enzymatic measurement sensors and an onboard calibrant. With a wide operating test range, IRMA TRUpoint can be used in colder ORs. Most cartridges do not require refrigerated storage and are ready to use anywhere, anytime.



ITC

For more than 35 years, ITC has been at the Point of Care. By focusing exclusively on bedside testing longer than anyone else, we've always made a difference wherever you need it. And with service and support that's second to none, we're by your side, so you can stay by theirs.

To learn more about IRMA TRUpoint and how ITC can help you improve patient care at the bedside, contact us at **1.800.631.5945** or visit **www.itcmed.com**.

©2007 ITC. All rights reserved. ITC and IRMA TRUpoint are registered trademark of International Technidyne Corporation in the United States and other jurisdictions.



International Technidyne Corporation
8 Olsen Avenue • Edison, NJ 08820 USA
tel: 732.548.5700 • fax: 732.248.1928
www.itcmed.com
a subsidiary of Thoratec Corporation

CARTRIDGE TEST MENU		CC	BG	H3	H4	GL	CR	LA	
Measured Values	pH	•	•						
	pCO ₂	•	•						
	pO ₂	•	•						
	Na ⁺	•		•	•	•			
	K ⁺	•		•	•	•			
	Cl ⁻				•	•			
	iCa	•		•					
	Glu					•			
	BUN				•				
	Hct	•		•	•				
	Creatinine							•	
	Lactate								•
	Calculated Values	HCO ₃ ⁻	•	•					
TCO ₂		•	•						
BE _{ecf}		•	•						
BE _b		•	•						
O ₂ SAT		•	•						
iCa(N)		•							
tHb		•		•	•				
MDRD GFR								•	