

QUALITY FORWARD
CONSISTENCY FORWARD
LAB FORWARD

UniCel DxI Access Immunoassay Systems



**BECKMAN
COULTER**

When it comes to immunoassay testing, mid- to high-volume laboratories have specific needs:

- » Exceptional productivity
- » Ease-of-use
- » Broad menu availability
- » Expandability

The UniCel DxI Family of Immunoassay System is the Solution. ➤



THROUGHPUT AND CONSISTENCY

The UniCel DxI family of analyzers are designed to meet the throughput needs of any mid- or high-volume laboratory. Whether it is the DxI 600, that can run 200 tests per hour, or the high-speed DxI 800, with a maximum throughput of 400 tests per hour. Each DxI analyzer uses the same proven chemiluminescent technology, the same assay cartridges and similar assay protocols. So, your laboratory can deliver consistent patient results, no matter which UniCel immunoassay system performs the test. Equivalent patient results simplify interpretation by physicians, which helps improve patient care.

For the laboratory, consistency between analyzers adds more benefits:

- » Operator training is simplified and reduced.
- » Inventory management is less time-consuming.
- » Reliable system operation is achieved through proven technology.

AUTOMATION FOR PEAK PRODUCTIVITY >

Proven Analytical Performance

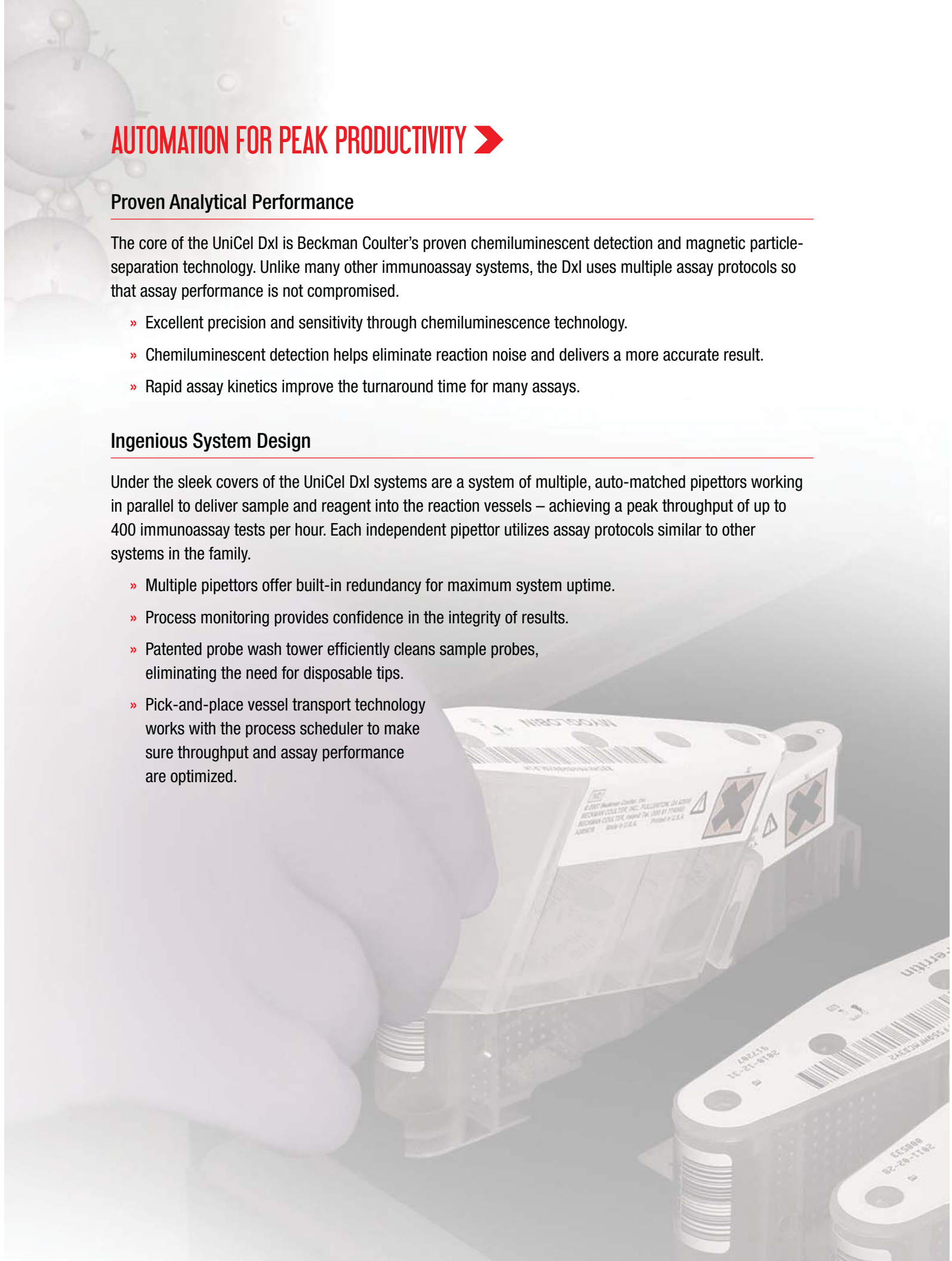
The core of the UniCel DxI is Beckman Coulter's proven chemiluminescent detection and magnetic particle-separation technology. Unlike many other immunoassay systems, the DxI uses multiple assay protocols so that assay performance is not compromised.

- » Excellent precision and sensitivity through chemiluminescence technology.
- » Chemiluminescent detection helps eliminate reaction noise and delivers a more accurate result.
- » Rapid assay kinetics improve the turnaround time for many assays.

Ingenious System Design

Under the sleek covers of the UniCel DxI systems are a system of multiple, auto-matched pipettors working in parallel to deliver sample and reagent into the reaction vessels – achieving a peak throughput of up to 400 immunoassay tests per hour. Each independent pipettor utilizes assay protocols similar to other systems in the family.

- » Multiple pipettors offer built-in redundancy for maximum system uptime.
- » Process monitoring provides confidence in the integrity of results.
- » Patented probe wash tower efficiently cleans sample probes, eliminating the need for disposable tips.
- » Pick-and-place vessel transport technology works with the process scheduler to make sure throughput and assay performance are optimized.



THE UniCel DxI

DESIGNED WITH YOUR NEEDS IN MIND >

ON-BOARD ALIQUOT CAPABILITY

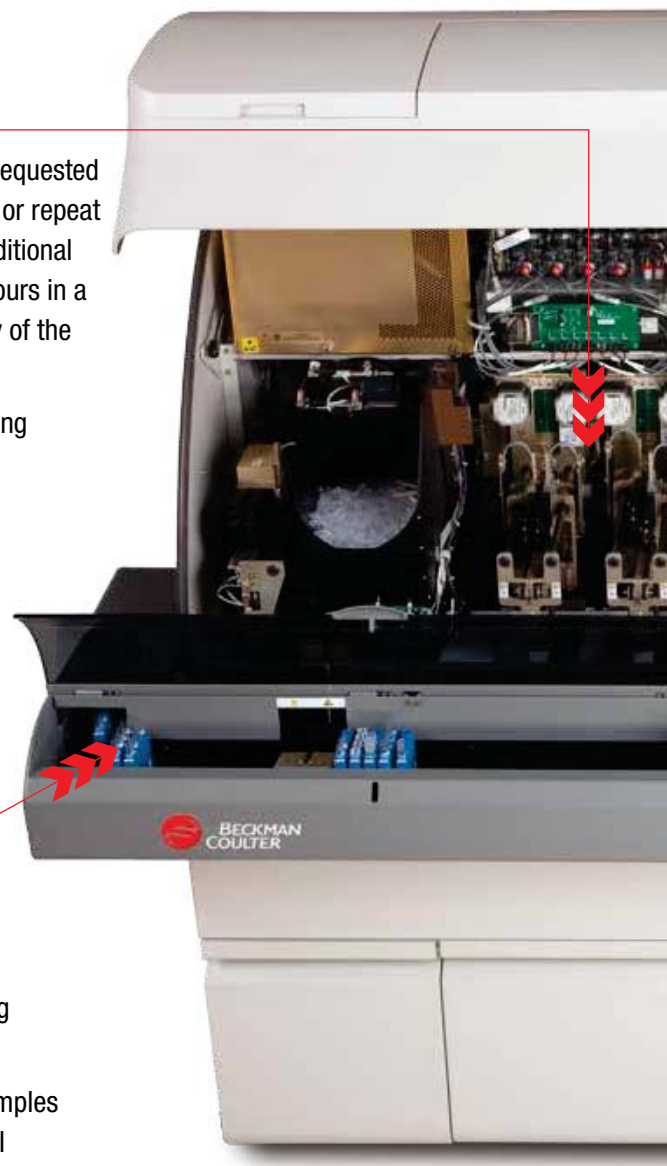
The UniCel DxI system creates aliquots based on the volume of requested tests plus any additional volume required for user-defined reflex or repeat test scenarios. To maintain sample stability and facilitate any additional testing required, the system stores the aliquots for up to three hours in a patented refrigerated storage area. This unique aliquot capability of the UniCel DxI helps improve your laboratory workflow.

- » The automatic reflex capability eliminates the task of tracking down sample tubes and reloading them.
- » The same vessel type is used for aliquots and reactions.
- » Automated on-board dilution.
- » Allows on-system user-defined reflex conditions and repeat testing for automatic dilutions.

STREAMLINED SAMPLE HANDLING

With the UniCel DxI, operators can load racks consistently, up to 30 racks (120 samples).

- » The system automatically creates aliquots of the sample, so each rack is released in less than five minutes for testing in other areas of the laboratory.
- » Routine sample loading can be interrupted to load STAT samples quickly — your lab can take advantage of the system's full menu without impacting the throughput of STAT assays.
- » Radio frequency sensors on the sample probe alert operators to short samples.
- » Obstruction detection on the sample and reagent probes helps ensure sample integrity and accurate results.
- » Advanced washing protocols for probes.
- » By releasing the primary tube quickly, the system allows for continuous loading of routine samples, virtually eliminating bottlenecks.



SIMPLICITY IN MOTION

The UniCel DxI systems deliver high throughput with minimal operator intervention. Although extremely powerful, the UniCel DxI systems are amazingly simple to use.

- » Operators can load all reagents and consumables 'on-the-fly' without using the console computer.
- » Operators can still access the system from the front for STATs, calibrators and other sample exceptions.
- » Indicator lights alert operators to system status and a pictogram shows which supplies need replenishment.
- » The system delivers up to three hours of walkaway operation.

EFFICIENT REAGENT SYSTEM

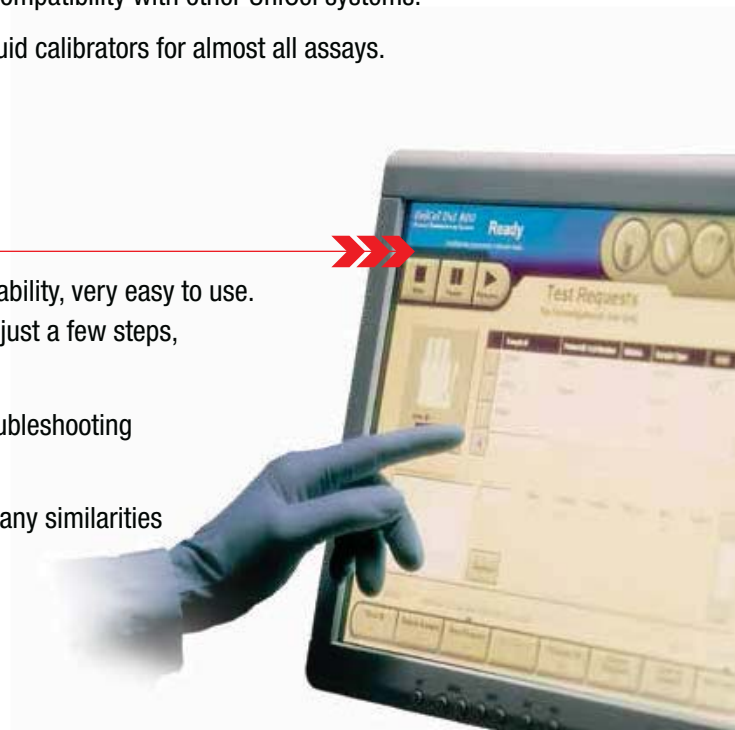
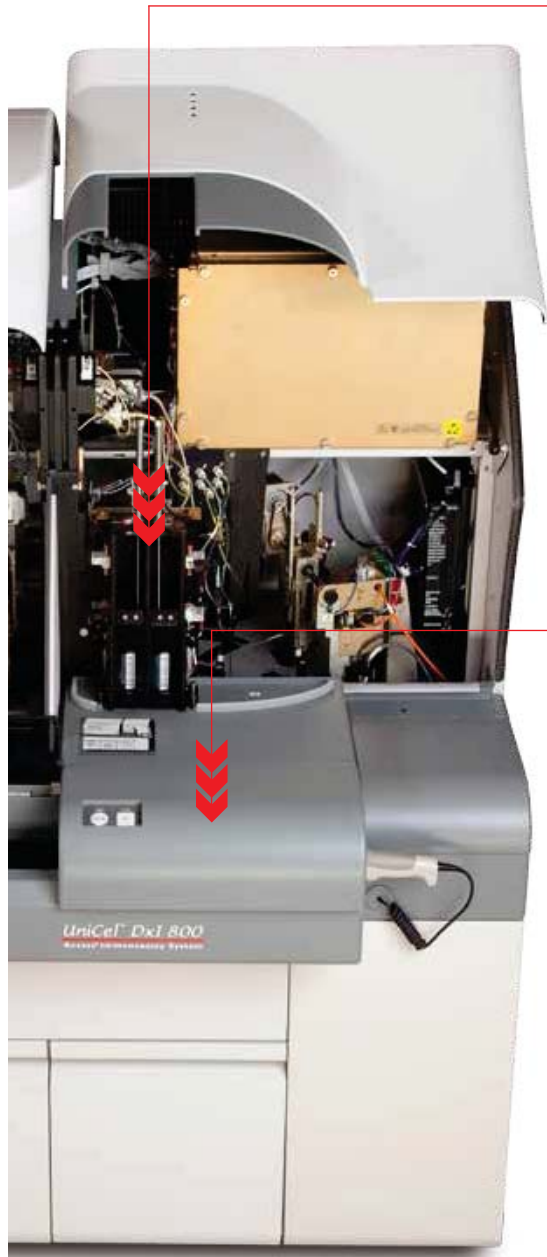
Bar-coded, liquid, ready-to-use reagents can be loaded on the system quickly and easily. The system holds 50 self-resealing reagent packs, which gives you the flexibility to configure the system menu to match your testing requirements.

- » Load up to four reagent packs at a time without touching the system console.
- » Each reagent pack contains everything needed to run an assay in one single convenient container.
- » System maintains stored reagents in an on-board refrigerator, maintaining reagent stability up to labelled expiration dates.
- » Reagent pack compatibility with other UniCel systems.
- » Easy-to-use liquid calibrators for almost all assays.

INTUITIVE USER INTERFACE

Operators find the graphical user interface with touch screen capability, very easy to use. Manual test requests, calibration and QC can be accomplished in just a few steps, reducing operator time.

- » The software includes context-sensitive help to facilitate troubleshooting and operator training.
- » Laboratories equipped with other UniCel systems will find many similarities in the user interface screens and system operation, which expedites operator training.

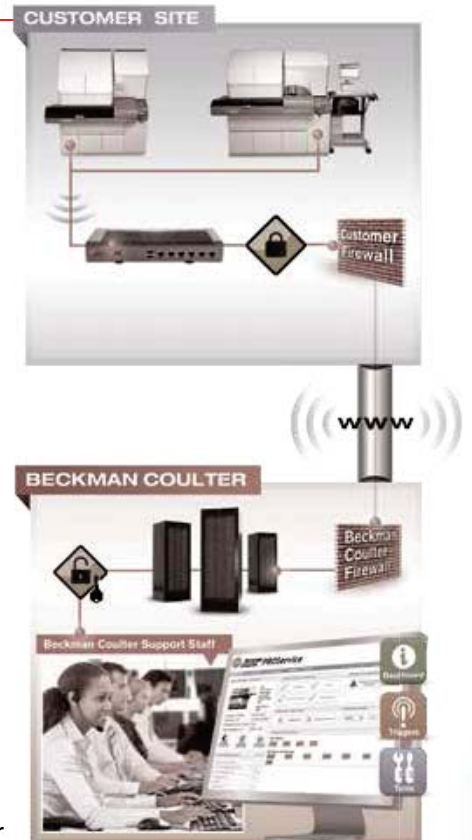


INNOVATION DELIVERS POWERFUL EFFICIENCY >

Remote Monitoring

PROService is an optional, remote management system that continuously monitors Beckman Coulter instruments to identify problems before they become evident in the laboratory. If a parameter goes out of normal range (e.g., temperature, power or vacuum pressure) PROService automatically alerts the Beckman Coulter Support Center. A Call Center agent may then contact your lab and, with permission, perform further diagnosis or actual system correction. If a service visit is necessary, your Field Service Engineer is able to bring exactly the right parts and supplies needed to correct the problem. So what is the value to the customer?

- » Decrease in workflow disruptions that may be caused by an onsite FTE presence.
- » Increased uptime: Beckman Coulter's PROService Alert Triggers communicate predictive failures to Support teams for review before an unexpected downtime scenario.
- » Time-to-resolution is greatly reduced with immediate remote triage and repair. Dispatch and travel time of service engineers in the field increases the average time-to-repair, helping to ensure a higher level of business continuity – sustained testing, less downtime.
- » Immediate and accurate diagnosis. Help is only a mouse click away for instant remote support from trained Beckman Coulter personnel. The toolsets they will have access to will ensure timeliness and accuracy. If parts are required, they can be shipped and meet the FTE (if needed) onsite.



BROAD MENU >

Several of the available tests, such as Hybritech PSA and free PSA, provide gold-standard performance for sensitivity and specificity.

With a broad menu across a wide variety of disease states, the UniCel DxI immunoassay system enables your laboratory to consolidate workstations.

An aggressive menu development program means that the system menu will grow as your lab and testing requirements grow.

Minimal Maintenance

- » Minimal 'hands-on' daily maintenance and no weekly maintenance increases instrument uptime, enhancing productivity.
- » More than 130 sensors monitor system status and test processing to ensure result integrity.
- » Automated 'behind the scene' cleaning procedures ensure optimal instrument performance.

Integration with Automation

'Point-in-space' pipetting technology aligned with CLSI guidelines allows for integration with laboratory automation systems, including Beckman Coulter's Progressive Automation Solutions.



ADRENAL/PITUITARY

Cortisol (Serum/Plasma/Urine)

ALLERGY

Total IgE

ANEMIA

EPO
Ferritin
Folate
Folate (RBC)
Intrinsic Factor Ab
sTfR
Vitamin B12

BONE METABOLISM

Intact PTH
Ostase
Ultrasensitive hGH

CARDIAC

AccuTnl+3 troponin I
CK-MB
Digoxin
Myoglobin
Triage BNP*

DIABETES

Ultrasensitive Insulin

INFECTIOUS DISEASE

Rubella IgG
Toxo IgG
Toxo IgM II

REPRODUCTIVE

AFP
βhCG, Total
DHEA-S
Estradiol
hFSH
hLH
Inhibin A
Progesterone
Prolactin
SHBG
Testosterone
Unconjugated Estriol

THYROID

Fast hTSH
HYPERsensitive hTSH
T3 (Free and Total)
T4 (Free and Total)
Thyroglobulin
Thyroglobulin Ab II
Thyroid Uptake
TPOAb

TUMOR MARKERS

AFP
CEA
Hybritech PSA
Hybritech free PSA
Prostate Health Index (*phi*)**
BR Monitor (CA 15-3 Antigen)
GI Monitor (CA 19-9 Antigen)
OV Monitor (CA 125 Antigen)

* Triage BNP is available exclusively from Alere San Diego, Inc. d/b/a Biosite Incorporated, an Alere Company, or its authorized distributors for use on Beckman Coulter immunoassay systems. Alere and Triage are trademarks of the Alere group of companies.

** *phi* is a combination of Hybritech PSA, free PSA and p2PSA.

THE UniCel FAMILY OF INTEGRATED SYSTEMS >

The Growing UniCel Family Continues to Offer More

The UniCel immunoassay family has grown from one instrument into an entire family, including the wide range of UniCel integrated systems.

The UniCel integrated systems help illustrate the key UniCel concept: transforming your laboratory's daily operations into the perfect blend of peak performance, outstanding capacity and simplicity of operation.

Count on UniCel immunoassay and integrated systems to deliver:

- » Consistent system software across all testing platforms.
- » Consolidation of testing to improve turnaround times.
- » Equivalent test results across the UniCel family of immunoassay instruments.
- » Common data management to organize and track vital information.

UniCel Dxl 600 and 800 Access Immunoassay Systems

200 Immunoassay tests/hr. (Dxl 600)

400 Immunoassay tests/hr. (Dxl 800)

Chemiluminescent detection

Magnetic particle-separation technology

Continuous loading

- » STAT samples
- » Routine samples

No-downtime loading of reagents/consumables

Integrated system upgradable

Progressive Automation Solutions integration available



UniCel Dxl 600



UniCel DxI 800

UniCel DxC 660i Synchron Access Clinical System

990 Chemistry tests/hr.
200 Immunoassay tests/hr.
On-board capacity of 115 reagents
» 65 Clinical Chemistries
» 50 Immunoassays
ClozCap technology
Closed-tube sampling
200 aliquots/hr.
Single-point sample entry
No-downtime loading of reagents/consumables



UniCel DxC 680i Synchron Access Clinical System

990 Chemistry tests/hr.
400 Immunoassay tests/hr.
On-board capacity of 115 reagents
» 65 Clinical Chemistries
» 50 Immunoassays
ClozCap technology
Closed-tube sampling
200 aliquots/hr.
Single-point sample entry
No-downtime loading of reagents/consumables



UniCel DxC 860i Synchron Access Clinical System


1440 Chemistry tests/hr.
200 Immunoassay tests/hr.
On-board capacity of 120 reagents
» 70 Clinical Chemistries
» 50 Immunoassays
ClozCap technology
Closed-tube sampling
200 aliquots/hr.
Single-point sample entry
No-downtime loading of reagents/consumables



UniCel DxC 880i Synchron Access Clinical System

1440 Chemistry tests/hr.
400 immunoassay tests/hr.
On-board capacity of 120 reagents
» 70 Clinical Chemistries
» 50 Immunoassays
ClozCap technology
Closed-tube sampling
200 aliquots/hr.
Single-point sample entry
No-downtime loading of reagents/consumables





For Beckman Coulter's worldwide office
locations and phone numbers, please visit

www.beckmancoulter.com/contact



Beckman Coulter, the stylized logo, Access, AccuTnl, Ostase and Hybritech are trademarks of Beckman Coulter, Inc. and are registered with the USPTO. Lumi-Phos is a trademark of Lumigen, a Beckman Coulter Company

For Beckman Coulter's worldwide office locations and phone numbers, please visit www.beckmancoulter.com/contact

BR-18683A B2014-14689
© 2014 Beckman Coulter, Inc.

www.beckmancoulter.com